



A PINT-SIZED GIANT:
NOW WITH BASEBOARD!



i.MX6UL SoM
QUICK SOLUTIONS WITH SoM AND BASEBOARD

COMPLEX APPLICATION PROCESSOR, AS EASY TO USE AS A MICROCONTROLLER!

The Internet of Things (IoT) requires ever smaller, higher-performing but yet more cost-efficient controller solutions, with maximum demands in terms of computing power, interface variety and driver support. Ever more complex systems have to be developed in ever shorter cycles.

For the price of a microcontroller, the i.MX6 Ultralite processor offers you a high-yield application processor featuring a Cortex A7 core, a clock frequency of 528 MHz and a variably configurable interface landscape.

Get your project started right now with the compact exceet SoM pre-installed on the baseboard. Ready for testing, development or direct use with your application. Keep pace with ever-shorter development cycles while relying on industry-capable solutions and processor modules with guaranteed long-term availability.

FEATURES

- Embedded application and control processor
- Module featuring Cortex A7 architecture, RAM and Flash, Ethernet and serial interfaces, GPIOs, as well as I²C, SPI and LCD interface
- Pre-installed embedded Linux operating system incl. all drivers for communication and LCD/touch interfaces

CUSTOMER BENEFITS

- Quick and easy realization of complex processor solutions
- Low-cost solutions possible using simple baseboards
- Custom add-on functions via expansion plug-ins
- No special know-how needed for DDR3 RAM integration
- Full Linux toolchain available free of charge
- Short time to market

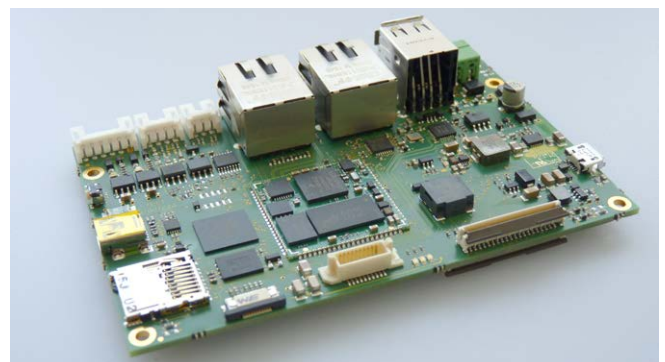
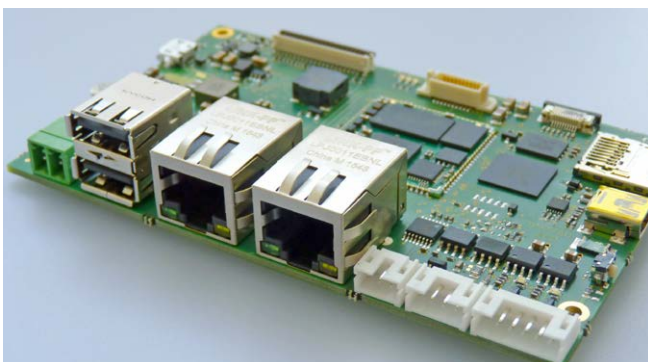
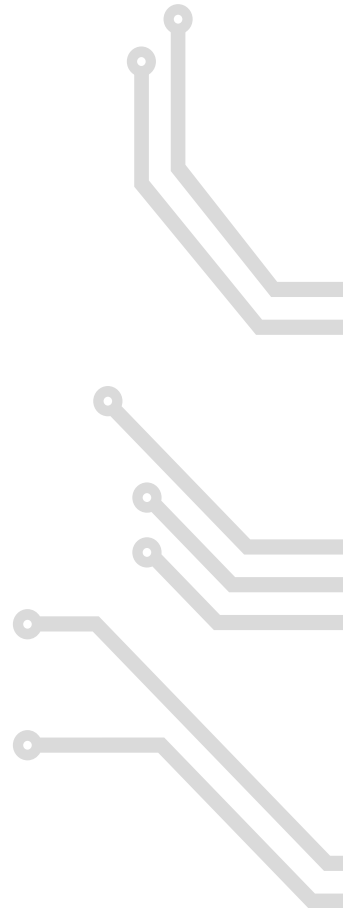
APPLICATIONS

- Industry
- Medical technology
- Communications
- IIoT (Industrial Internet of Things)
- M2M (machine to machine)
- Same processor module for variant-rich baseboard families
- No special know-how needed for DDR3 RAM integration
- Minimum footprint



TECHNICAL DATA

FUNCTION	STANDARD LAYOUT	OPTIONS
MICROPROCESSOR		
CPU	i.MX 6UltraLite 2 (Cortex A7, 528 MHz)	
MEMORY SoM MODULE		
DDR3-RAM	256 MB	512 MB / 1 GB
NOR-Flash	1 MB	
NAND-Flash	256 MB	512 MB
MEMORY SoM BASEBOARD		
eMMC	4 GB	4 GB .. 128 GB
SD-Card	1x microSD	
COMMUNICATION		
Ethernet	2x 10/100 Mbit	
USB Host	2x USB 2.0	
USB OTG	1x	
Serial	1xRS232, 1x RS485	
CAN	1x alternative to RS485 (same plug)	
DIO	2x digital IO (24V/0,8A)	
AIO	2x analog IN (0..24V)	
DISPLAY / TOUCH		
LCD Interface	1x RGB	
Touch	1x capacitive	
OTHER		
Power supply	9..32V DC	
Temperature range	0 .. +70°C	
Operating system	Embedded Linux (Yocto)	
Form factor	105,5 x 67 mm (4,3")	
RTC buffering	battery CR1220	
Expansion plugs	SPI, USB, I ² C, GPIO	



exceet electronics GmbH
Kantstraße 10
72663 Großbettlingen
Germany

Phone: +49 7022 4057-0
Fax: +49 7022 4057-22
E-Mail: info@exceet-electronics.de
Web: www.exceet-electronics.de



exceet electronics GesmbH
Wildbichler Straße 2E
6341 Ebbs
Austria

Phone: +43 5373 43143-0
Fax: +43 5373 43143-888
E-Mail: info@exceet-electronics.at
Web: www.exceet-electronics.at

exceet electronics AG
Riedstrasse 1
6343 Rotkreuz
Switzerland

Phone: +41 41 799 47 99
Fax: +41 41 799 47 98
E-Mail: info@exceet-electronics.ch
Web: www.exceet-electronics.ch

We point out that all used brand names refer to the general brand, trademark or patent protection of the respective company or facility.

