



A PINT-SIZED GIANT:  
NOW WITH BASEBOARD!



**i.MX6UL-2 SoM**  
QUICK SOLUTIONS WITH SoM AND BASEBOARD

## COMPLEX APPLICATION PROCESSOR, AS EASY TO USE AS A MICROCONTROLLER!

The Internet of Things (IoT) requires ever smaller, higher-performing but yet more cost-efficient controller solutions, with maximum demands in terms of computing power, interface variety and driver support. Ever more complex systems have to be developed in ever shorter cycles.

For the price of a microcontroller, the i.MX6 Ultralite processor offers you a high-yield application processor featuring a Cortex A7 core, a clock frequency of 528 MHz and a variably configurable interface landscape.

Get your project started right now with the compact exceet SoM pre-installed on the baseboard. Ready for testing, development or direct use with your application. Keep pace with ever-shorter development cycles while relying on industry-capable solutions and processor modules with guaranteed long-term availability.

### FEATURES

- Embedded application and control processor
- Module featuring Cortex A7 architecture, RAM and Flash, Ethernet and serial interfaces, GPIOs, as well as I<sup>2</sup>C, SPI and LCD interface
- Pre-installed embedded Linux operating system incl. all drivers for communication and LCD/touch interfaces

### CUSTOMER BENEFITS

- Quick and easy realization of complex processor solutions
- Low-cost solutions possible using simple baseboards
- Custom add-on functions via expansion plug-ins
- No special know-how needed for DDR3 RAM integration
- Full Linux toolchain available free of charge
- Short time to market

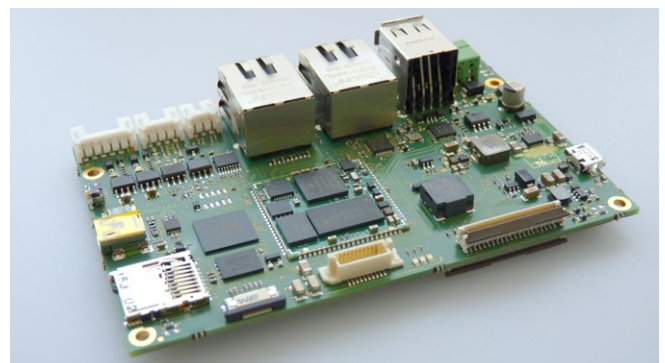
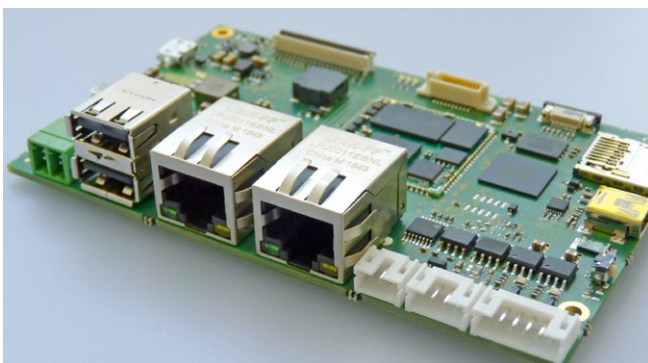
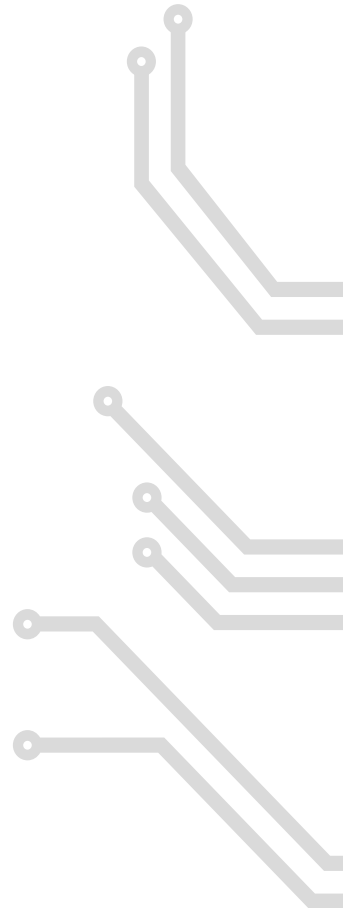
### APPLICATIONS

- Industry
- Medical technology
- Communications
- IIoT (Industrial Internet of Things)
- M2M (machine to machine)
- Same processor module for variant-rich baseboard families
- No special know-how needed for DDR3 RAM integration
- Minimum footprint



# TECHNICAL DATA

FUNCTIONS	STANDARD LAYOUT	OPTIONS
<b>MICROPROCESSOR</b>		
CPU	i.MX 6UltraLite 2 (Cortex A7, 528 MHz)	
<b>MEMORY SoM MODULE</b>		
DDR3-RAM	256 MB	512 MB / 1 GB
NOR-Flash	1 MB	
NAND-Flash	256 MB	512 MB
<b>MEMORY SoM BASEBOARD</b>		
eMMC	4 GB	4 GB .. 128 GB
SD-Card	1x microSD	
<b>COMMUNICATION</b>		
Ethernet	2x 10/100BaseT	
USB Host	2x USB 2.0	
USB OTG	1x	
Serial	1xRS232, 1x RS485	
CAN	1x alternative to RS485 (same plug)	
DIO	2x digital IO (24V/0,8A)	
AIO	2x analog IN (0..24V)	
<b>DISPLAY</b>		
LCD Interface	1x RGB	
<b>OTHER</b>		
Power supply	9..32V	
Power consumption	< 1,5 W (depending on I/O configuration)	
Temperature range	0 - 70°C	
Operating system	Standard: Embedded Linux	
Form factor	105,5 x 67 mm (4,3")	
RTC buffering	battery CR1220	
Expansion plugs	SPI, USB, I <sup>2</sup> C, GPIO	



**exceet electronics GmbH**  
Kantstraße 10  
72663 Großbettlingen  
Germany

Phone: +49 7022 4057-0  
Fax: +49 7022 4057-22  
E-Mail: [info@exceet-electronics.de](mailto:info@exceet-electronics.de)  
Web: [www.exceet-electronics.de](http://www.exceet-electronics.de)



**exceet electronics GesmbH**  
Wildbichler Straße 2E  
6341 Ebbs  
Austria

Phone: +43 5373 43143-0  
Fax: +43 5373 43143-888  
E-Mail: [info@exceet-electronics.at](mailto:info@exceet-electronics.at)  
Web: [www.exceet-electronics.at](http://www.exceet-electronics.at)

**exceet electronics AG**  
Riedstrasse 1  
6343 Rotkreuz  
Switzerland

Phone: +41 41 799 47 99  
Fax: +41 41 799 47 98  
E-Mail: [info@exceet-electronics.ch](mailto:info@exceet-electronics.ch)  
Web: [www.exceet-electronics.ch](http://www.exceet-electronics.ch)

We point out that all used brand names refer to the general brand, trademark or patent protection of the respective company or facility.

